

GUILD OF BERKSHIRES - Hanging Standards – 2024 v3

NB: ALL ART TO BE DISPLAYED IN GUILD OF BERKSHIRE ARTISTS SHOWS – must meet these standards or it will not be accepted. GBA and the Shows Committee reserve the right to review and approve any/all art and the final display of all art in our shows.

Measuring your artwork – use this sequence: Height, Width, Depth - H x W x D

2D Art: Framed work must be dry and ready to hang using securely attached picture wire – no saw tooth hangers. Wire should be attached to the frame with hanging hardware (not just a nail or screw), $\frac{1}{4}$ to $\frac{1}{3}$ of the distance (height) from the top of the frame. Once hung, the picture wire (twisted wire, no fishing line) must not be visible when viewing the work. Frames must be in close to perfect condition – no scratches, dents, peeling paint, etc. Glass must be cleaned and ready to hang.

Canvas wraps (canvas work that is not framed) must have the image extended to completely cover the exposed sides which are at least $\frac{1}{2}$ " thick. The corners must be neat and the sides free of staples, tacks, or anything not part of the image. Frames must hang flat without warping. A hanging wire attached to the stretcher bars is preferred.

Alternative Mounting Methods: Unframed work should be mounted on a dimensionally stable substrate no less than $\frac{1}{2}$ " thick. The sides should be finished. Hanging wire standards apply. Photographs on metal must be presented according to current gallery standards and include backing to allow the piece to stand $\frac{1}{2}$ " away from the wall.

Work too heavy to hang from a 30-lb. hook – on the panels or walls – must arrive with its own display equipment (i.e., easel, hanging rack, display stand.) The artist must discuss this with the Hanging Committee Chair prior to the day of check-in.

Framed work to be displayed with the 3-D art (small framed work with self-supporting display—e.g. desk top frames with supports) is subject to the same framing quality standards as the work on the walls, but must also meet the display requirements for 3-D art. The frame may or may not have hanging hardware and wire.

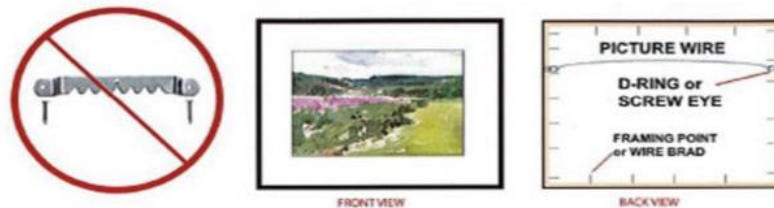
Price tags fixed to the back of art works must match the description on your entry to the show, and looped around the wire on the back of the work or a sticker attached to 3D work with your name or code, title, medium and price. Exhibition tags, in PDF form, are in "forms" area of the members area.

Bin Art: When Bins are used, they are for displaying unframed prints, drawings and similar ephemera that cannot be hung on the walls. Bin work must be covered with cellophane or similar protection.

3-D Art: Art must sit/stand securely on a level surface. If the art cannot stand alone, the artist must provide a suitable stand or display unit. (i.e., easel, hanging rack, pedestal, etc.) The artist must also discuss this unit with the Hanging Committee prior to the day of Check-in. 3-D Art intended to hang on the walls must be able to safely use the hanging hardware used for 2-D art. Special needs should be discussed with the Hanging Committee before show check-In.

FRAMING

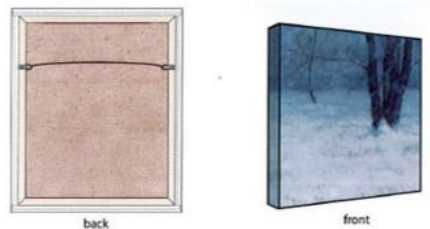
2-dimensional work on paper must be properly framed, glazed, wired, and ready to hang. No sawtooth hangers, clip frames or similar hardware. Use d-ring hangers (available at art supply houses and hardware stores) or screw eyes for securing wire. Use framer's points or wire brads to attach backing, etc., to frame. Do not use tape.



Canvas may be exhibited either framed or gallery wrapped. Gallery wrap is a method of stretching the canvas, so it wraps around the sides of the painting and is secured to the back. The result is no unsightly hardware (such as nails or staples) or raw canvas or wood on the sides of the painting, producing a frame-less gallery ready look. Screw eyes or d-ring hangers must be attached to the two opposing vertical stretchers—not to the top horizontal stretcher. Picture wire must be secured to the hangers and be relatively taut.

GALLERY WRAP

There are three options for the sides of your frame-less painting. Some artists leave the pristine white of the gessoed canvas, being careful not to get any paint on the sides (this can be facilitated by taping the sides), while others paint the sides a solid color. Still others continue the painting on the sides producing a slight three-dimensional effect to the artwork.



TRADITIONAL FRAMING METHOD FOR STRETCHED CANVAS AND PANELS

A traditional frame serves two functions. First and foremost a properly selected frame will enhance the presentation of the artwork. A frame allows the artist to paint on the support of their choice from stretched canvas to panels, while providing protection to the artwork.

